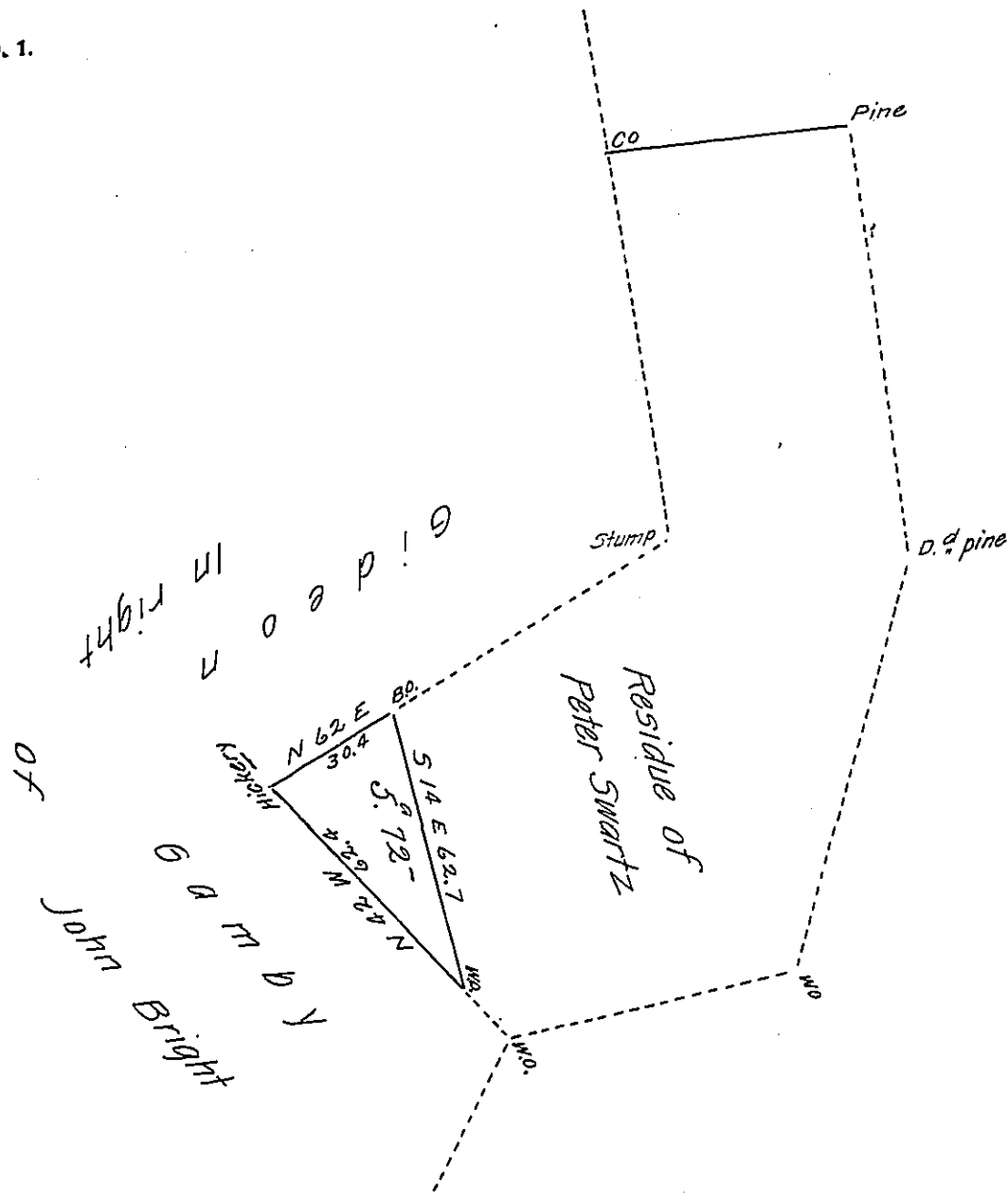


FORM NO. 1.



Situate in Perry township (late Mahantango.) Union County. Surveyed the 2^d day of August A.D. 1826 for Gideon Gamby Containing five Acres & Seventy two perches with the Usual Allowance of Six Pr. Cent &c. It being part of a tract of land surveyed the 15 June A.D. 1816. Pr. Simon Snyder Esq. then Deputy Surveyor for Peter Swartz in pursuance of his Warrant bearing date the 25 day of July A.D. 1814 for fifty Acres.

Pr. Jno. Hayes D.S.

To Gabriel Hiester Esquire }
Surveyor General Penn^a

IN TESTIMONY that the above is a copy of the original remaining on file in the Department of Internal Affairs of Pennsylvania, made conformably to an Act of Assembly approved the 16th day of February 1833, I have hereunto set my hand and caused the Seal of said Department to be affixed at Harrisburg, this twentyeighth day of January 1907.

Loane P. Brown
Secretary of Internal Affairs.